

# POLITICS AND POPULISM INFLUENCING TRADE AND CUSTOMS



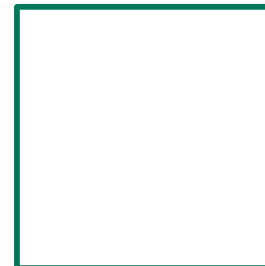
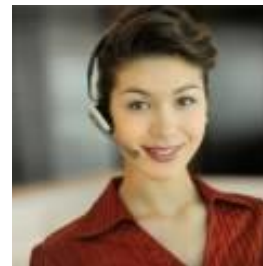
## Jean-Francois Auzéau

Director Customs,  
Ziegler France



# ZIEGLER GROUP

*Your supply chain partner*



## **Politics and Populism influencing trade and customs**

A medium-sized service provider perspective

by Jean-François Auzéau / Customs Manager Ziegler France

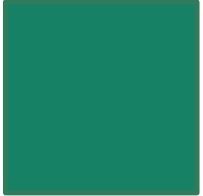


## ■ What is the EU ?

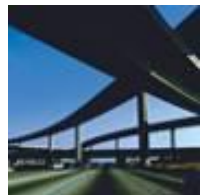
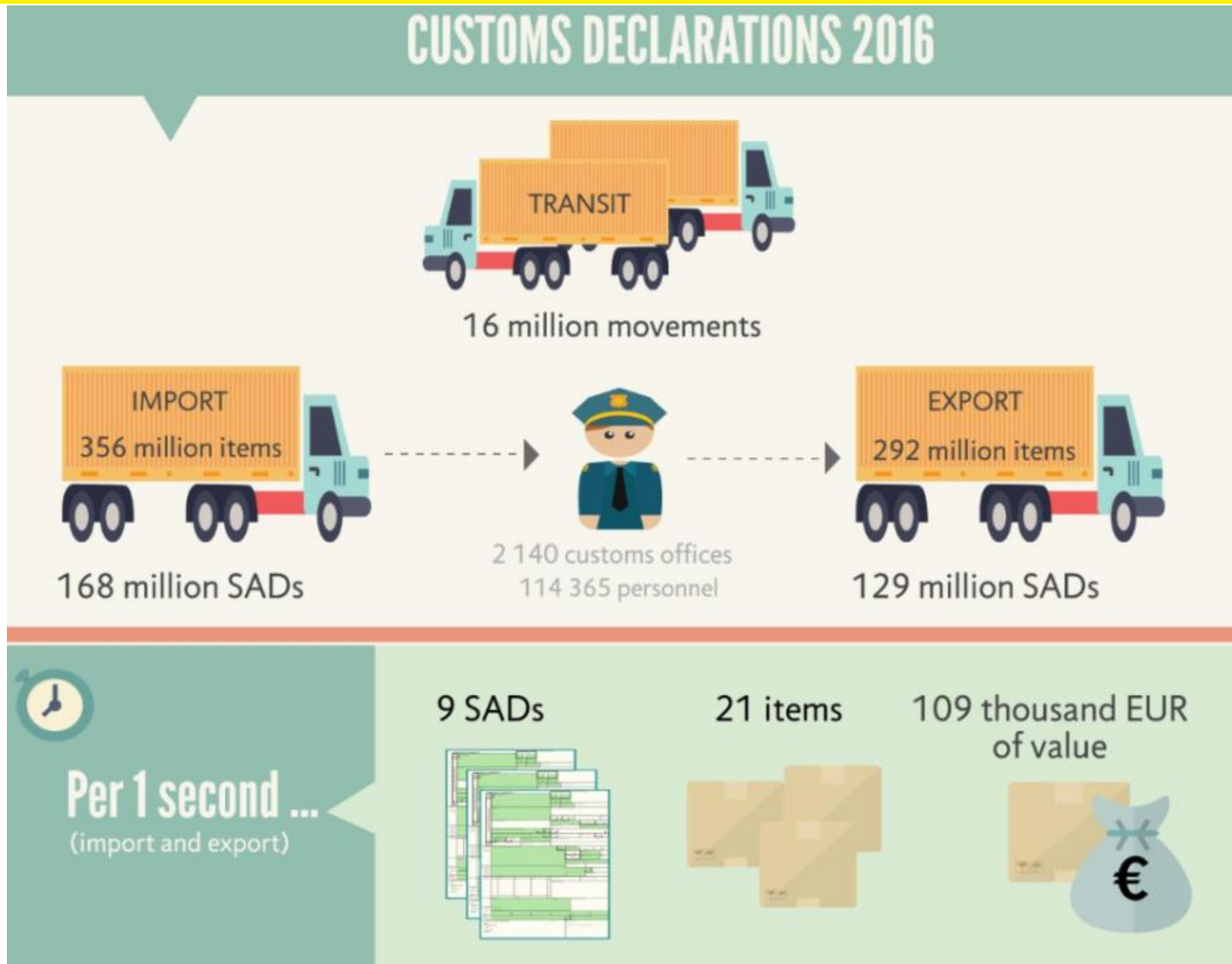
- First and since the beginning a customs union

## ■ Who is ruling the customs union ?

- The Commission and DG Taxud as far as customs matters are concerned;
- The member-states and to a large extent the various Customs authorities;
- The members of the Parliament are rarely Customs experts and they vote regulations submitted to them but prepared by the Commission and DG Taxud.
- Commission is consulting the trade directly through the associations like Clecat, or through the Trade Contact Group (TCG)



# A few figures .....



# Global developments influencing customs and trade



■ Mondialism and international trade



■ Terrorism



■ Drugs and drug business



■ Fake information



- A number of factors have emerged recently which will impact our business (negatively or positively):
  - Brexit
  - Trade war between USA and China
  - WTO at a standsill
  - Bilateral agreements vs Multilateralism
  - Terrorism
  - Insecurity / incivility
  - Fight against fraud



# The increasing role of Prohibitions, Export Controls and Sanctions

- ✓ Are regulations issued to protect ?  
or just to reinforce controls ?
- ✓ More regulations are issued every month which CR have to  
apply or must comply with.
- ✓ In ten months the EU has issued this year over 1,600 new  
regulations (more or less 15% dealing with customs matters)
- ✓ The growing number of information required to move freight  
from departure to destination.

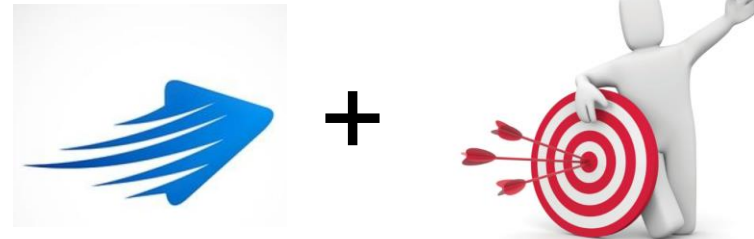


# What is expected from CR ?

- COMPLIANCE



- SPEED but also ACCURACY



- PRICES



# ZIEGLER GROUP

*Thank you for your attention*

